

METAL TILE / METAL PANEL - CEILING

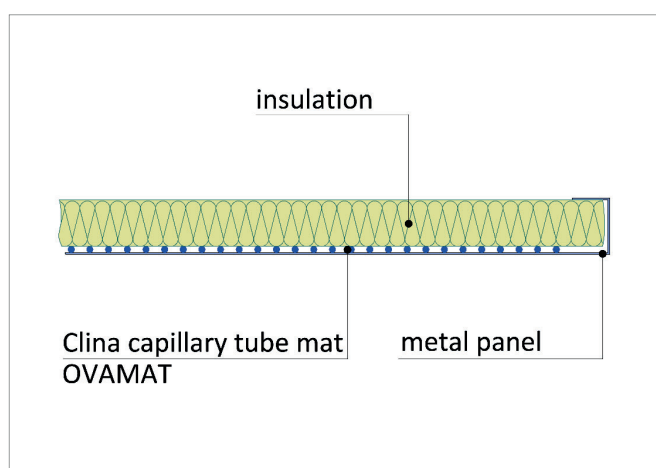
with capillary tube mat OVAMAT U 10 / UM 10 / G 10



System data sheet



New office building in Luxembourg © Clina Heiz- und Kühlelemente GmbH



CLINA - BETTER HEATING AND COOLING

METAL TILE / METAL PANEL - CEILING

with capillary tube mat OVAMAT U 10 / UM 10 / G 10



System data sheet

DESCRIPTION

- perforated panels are usually covered on the inside with an acoustic fleece on which the capillary tubes are fixed with glue
- in the case of unperforated tiles/panels the capillary tube mat is fixed directly on the metal with glue
- the tiles/panels, with the capillary tube mats integrated into them, are inserted into a suspended rail system and provided with an insulating material
- the capillary tube mats are connected to each other and to the prefabricated supply and return lines with flexible hoses using a proven push-lock system
- the leak test according to the factory guidelines is carried out before closing the ceiling

ADVANTAGES

HIGH PERFORMANCE

The specially developed capillary tube mat with an **oval** mat distributor pipe results in an increased contact surface.

GOOD ACOUSTICS

The capillary tube mat does not require any heat-conducting profiles which would cover the perforation and thus reflect the sound. The sound absorption values of the tile/panel manufacturers apply without restriction.

EASY RETROFITTING

With Clina capillary tube mats, every metal panel ceiling becomes a heating and cooling ceiling quickly and cost-effectively. The ceiling remains fully accessible for inspection.

MAXIMUM DEGREE OF ACTIVATION

The dimensions of the capillary tube mat are individually adapted to the size of the tile/panel.

TECHNICAL DATA



HEATING CAPACITY

according to DIN EN 14037/5

108,2 W/m²

ΔT = 15 K, active mat surface



COOLING CAPACITY

according to DIN EN 14240

94,5 W/m²

ΔT = 10 K, active mat surface



ACOUSTICS

(applies only to perforated version)

weighted sound absorption coefficient as specified by the manufacturer

INSTALLATION HEIGHT:

depending on the kind of metal tile/panel ceiling

SYSTEM WEIGHT: 1 kg/m² plus ceiling

Component	Material	Dimensions	Other
CAPILLARY TUBE MAT	polypropylene (PP-R), recyclable	oval mat distributor pipe: 20 x 12 x 2,0 mm capillary tube: 3,4 x 0,55 mm distance of the capillaries: 10 mm length & width: 10-20 mm smaller than the inner dimensions of the metal tile/panel	description: OVAMAT U 10 / UM 10 / G 10 weight (incl. water): 1 kg/m ² pressure stage: PN 10
TILE/PANEL	steel sheet, aluminium	according to manufacturer's specifications	all customary metal tiles/panels can be used
INSULATION	mineral wool or equivalent	according to tile/panel size	preferably welded in foil
PUSH-LOCK CONNECTION	polypropylene (PP-R), recyclable brass, partially nickel-plated	push-lock system: 10 mm	O-ring sealing
CONNECTING HOSE	inside: rubber (EPDM) outside: high pressure nylon fabric connector: nickel-plated brass	lengths: 500/800/1200/5000 mm diameter hose: DN 10 outside diameter connector: 10 mm	flexible, pressure stage: PN 10 push-lock system
SUPPLY AND RETURN LINES	polypropylene (PP-R), recyclable	depending on the room size	can be delivered prefabricated

CONTACT

Clina Heiz- und Kühlelemente GmbH
Eichhorster Weg 80 | 13435 Berlin

Fon: + 49 30 402054 – 0
Fax: + 49 30 402054 – 19

www.clina.de
info@clina.de